

CONTROL SECTION 12-01-00

CONTRACT NO. RFP150009
SHEET 1 OF 22



KM 7+926.723 TO KM 11+310.926
DETOURS, CLOSURES
STAGES 2 TO 7 TRAFFIC ACCOMMODATION PLANS (HIGHWAY 12)

MARTENSVILLE INTERCHANGE

HIGHWAY 12 STA 8+315.20 TO STA 11+710.00

TRAFFIC ACCOMMODATION PLAN - WORKS SUBMITTAL

DATE: 13-FEB-2018



LEGEND

CONSTRUCTION WORK ZONE

TRAFFIC FLOW (2 LANES)

TRAFFIC FLOW (HEAD TO HEAD)

TRAFFIC FLOW (1 LANE)

NOTES

1. PROVIDE DAILY SHORT-TERM SIGNAGE ADJACENT TO WORK ZONES PER TCMWZ AS REQUIRED.

2. COVER EXISTING SPEED SIGNAGE CONFLICTING WITH WORK ZONE SPEEDS.



Association of Professional Engineers & Technicians of Saskatchewan

CERTIFICATE OF AUTHORIZATION

McElhenny Engineering Services Ltd.
Member 80040

Professional in Good Standing

Discipline: Civil Engineering
Reg. No.: 44440
Name: _____



Government of Saskatchewan

Full Site Scale (m)

Scale: 1:2000

REVISIONS		CS	12-01-00	S/R NO	8-S2-3003
NO	DATE	INITIALS	DESCRIPTION	SHEET	OF
0	12-01-00	D. FRASER	WORKS SUBMITTAL	13	13
				15-FEB-2018	
				15-FEB-2018	

DETOUR - STAGE 2
MARTENSVILLE INTERCHANGE
TRAFFIC ACCOMMODATION PLAN
HIGHWAY 12 AT TOWNSHIP RD 382



SEE TAB 8-S2-2003

DATE: 12/01/2018 10:58 AM

Association of Professional Engineers & Geoscientists
of Saskatchewan
CERTIFICATE OF AUTHORIZATION
McElhenny Engineering Services Ltd.
Number 202-01
Responsible to Client for this
Project: M. P. No. Signature:
Date: 2023

Government of Saskatchewan
Full Scale Scale 3/8"

REVISIONS			CS	12-01-00	16-10	8-22-2003
NO	DATE	SCALE	PREP. BY	CHKD. BY	SHEET	OF
0	12-FEB-2018	D. FRASER	A. HEINEL	DAY	13	FEB-2018
WORK'S SUBMITTAL			DESIGNED BY		DATE	
1			T. BOOTH		13-FEB-2018	
1			D. FRASER			
NDC-039-REVISED SIGNAGE						

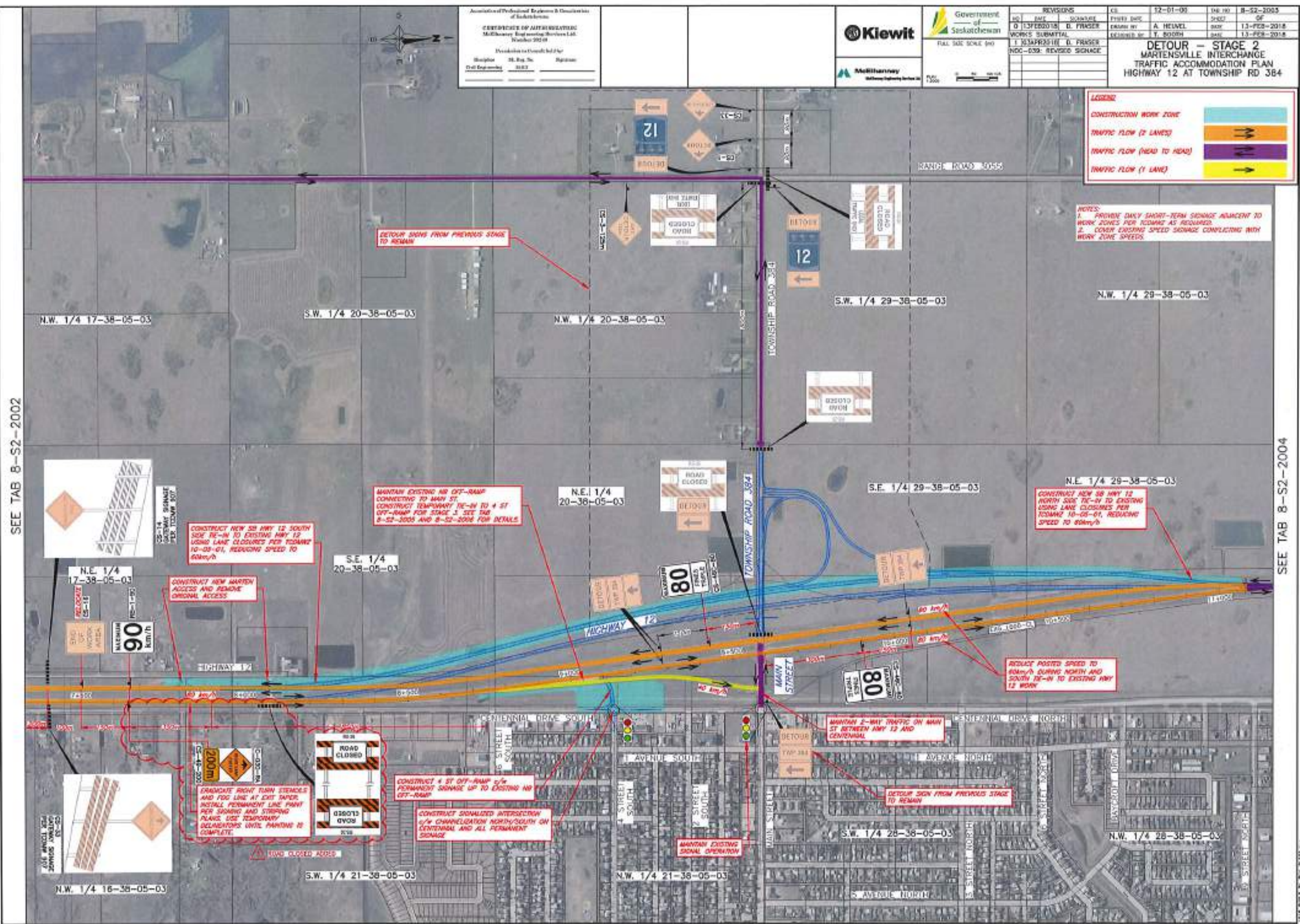
DETOUR - STAGE 2
MARTENSVILLE INTERCHANGE
TRAFFIC ACCOMMODATION PLAN
HIGHWAY 12 AT TOWNSHIP RD 384



NOTES:
1. PROVIDE DAILY SHORT-TERM SIGNAGE ADJACENT TO WORK ZONES PER TOWNSHIP AS REQUIRED.
2. COVER EXISTING SPEED SIGNAGE CONFLICTING WITH WORK ZONE SPEEDS.

SEE TAB 8-S2-2002

SEE TAB 8-S2-2004



CONSTRUCT NEW SB HWY 12 SOUTH SIDE TE-IN TO EXISTING HWY 12 USING LANE CLOSURES PER TOWNSHIP 10-05-01, REDUCING SPEED TO 60km/h

CONSTRUCT NEW MARTIN ACCESS AND REMOVE ORIGINAL ACCESS

ERADICATE RIGHT TURN STENCILS AND FOG LINE AT EXIT TAPER. INSTALL PERMANENT LINE PAINT PER SIGNING AND STRIPING PLANS. USE TEMPORARY DELAYERS UNTIL PAINTING IS COMPLETE.

MAINTAIN EXISTING NB OFF-RAMP CONNECTING TO HWY 12. CONSTRUCT TEMPORARY TE-IN TO 4 ST OFF-RAMP FOR STAGE 3. SEE TAB 8-S2-2003 AND 8-S2-2004 FOR DETAILS.

CONSTRUCT 4 ST OFF-RAMP w/ PERMANENT SIGNAGE UP TO EXISTING NB OFF-RAMP

CONSTRUCT SIGNALIZED INTERSECTION w/ CHANNELIZATION NORTH/SOUTH ON CENTENNIAL AND ALL PERMANENT SIGNAGE

CONSTRUCT NEW SB HWY 12 NORTH SIDE TE-IN TO EXISTING USING LANE CLOSURES PER TOWNSHIP 10-05-01, REDUCING SPEED TO 60km/h

REDUCE POSTED SPEED TO 60km/h DURING NORTH AND SOUTH TE-IN TO EXISTING HWY 12 WORK

MAINTAIN 2-WAY TRAFFIC ON HWY 12 BETWEEN HWY 12 AND CENTENNIAL

DETOUR SIGN FROM PREVIOUS STAGE TO REMAIN

MAINTAIN EXISTING SIGNAL OPERATION

ROAD CLOSED AHEAD

DATE PLOTTED: 2023-02-01

LEGEND

CONSTRUCTION WORK ZONE

TRAFFIC FLOW (2 LANES)

TRAFFIC FLOW (HEAD TO HEAD)

TRAFFIC FLOW (1 LANE)

Association of Professional Engineers & Geoscientists of Saskatchewan

CERTIFICATE OF AUTHORIZATION
Saskatchewan Engineering Services Ltd.
Number 28248

Provisional or Current held by:
Burlingame Sh. Reg. No. Agency
Ced. Expiry Date 2024

Kiewit

Government of Saskatchewan

McElhanney

Full Size Scale (m)

0 10 20 30 40 50

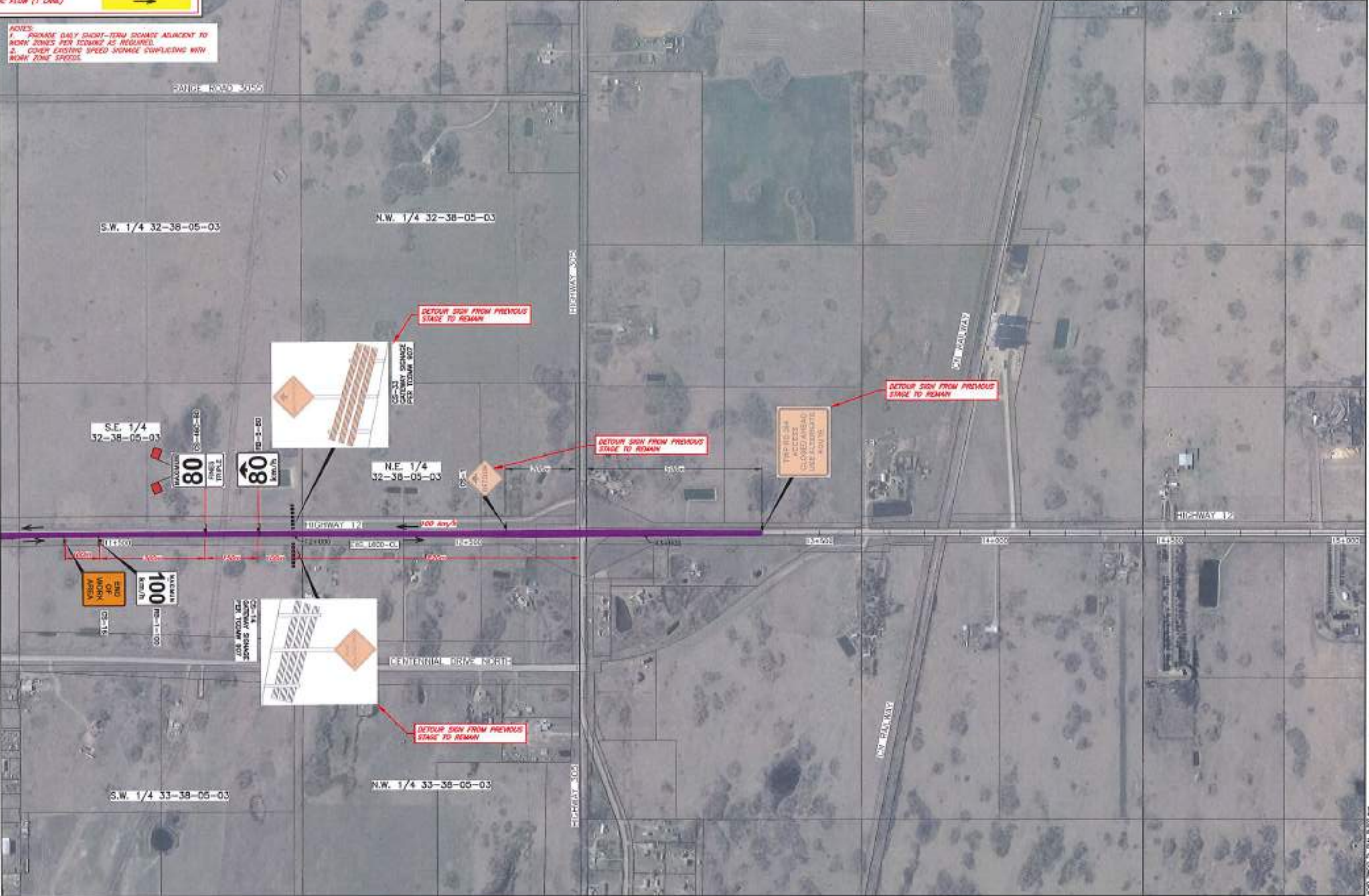
REVISIONS		DATE	BY	NO.
1	ISSUE	13-01-20	A. HEWEL	8-S2-3004
2	REVISED	13-05-2018	T. BOOTH	13-05-2018
3	WORKS SUBMITTAL	13-07-2018		13-07-2018

DETOUR - STAGE 2
MARTENSVILLE INTERCHANGE
TRAFFIC ACCOMMODATION PLAN
HIGHWAY 12 AT HIGHWAY 305

NOTES:

- PROVIDE DAILY SHORT-TERM SIGNS ADJACENT TO WORK ZONES PER SCHED AS REQUIRED.
- COVER EXISTING SPEED SIGNS COMPLYING WITH WORK ZONE SPEEDS.

SEE TAB 8-S2-2003



DATE: 13-07-2018



Association of Professional Engineers & Geoscientists of Saskatchewan
CERTIFICATE OF AUTHORIZATION
 McElhenny Engineering Services Ltd.
 Number 30483
 Practising in: Civil Engineering
 (S.E., S.G., P.E., S.P.E.)
 Signature: _____
 Date: _____



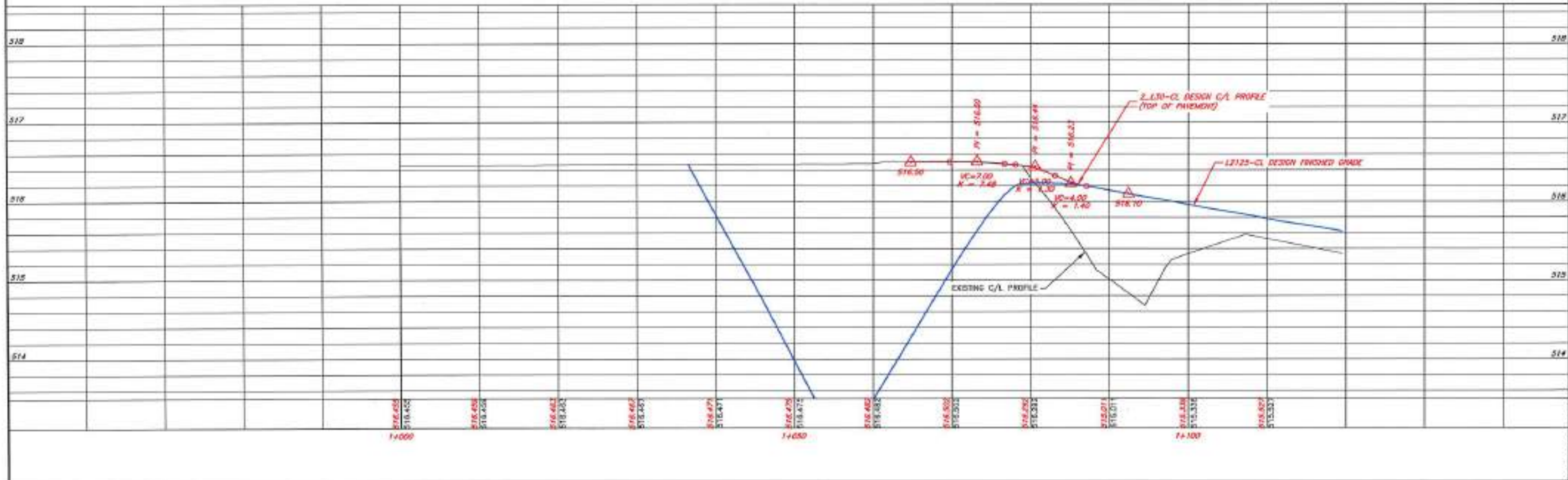
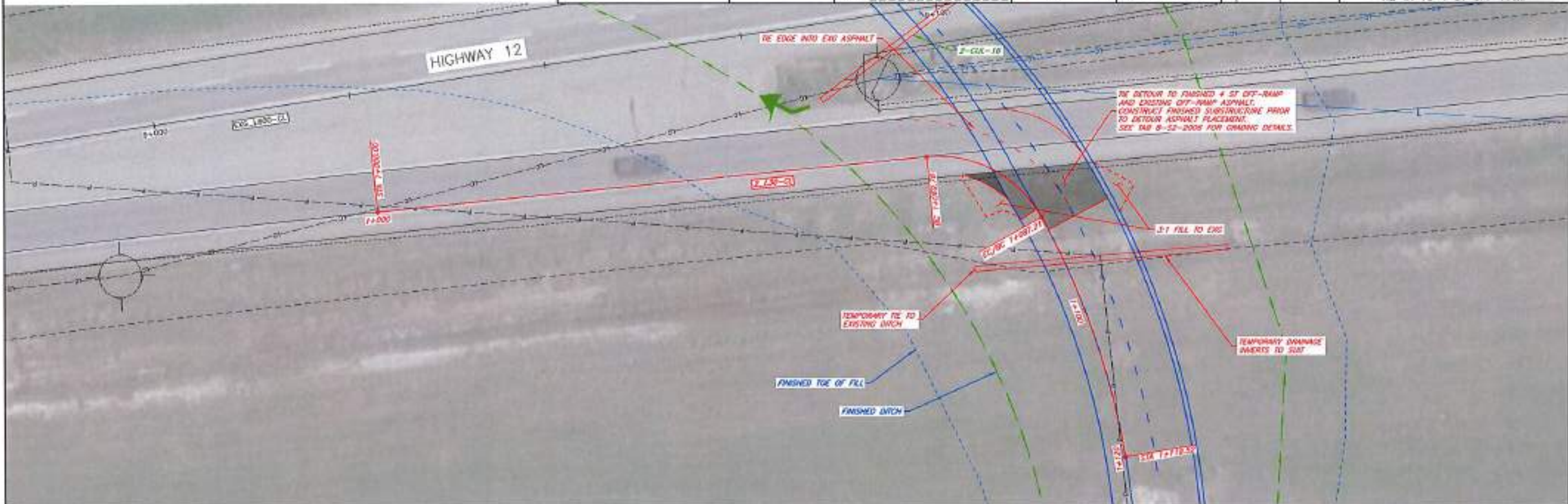
Kiewit

McElhenny Engineering Services Ltd.

Government of Saskatchewan
 FULL SIZE SCALE (m)
 PLAN SCALE
 PROFILE OF ROAD SCALE
 PROFILE OF GROUND SCALE

REVISIONS		DATE	BY	CHKD BY
NO.	DATE	REVISIONS	DESIGNER	DRAWN BY
0	03-FEB-2018	D. PHAGER	A. HEVEL	T. BOOTH
WORKS SUBMITTAL		DATE	BY	CHKD BY
		13-FEB-2018		

12-01-20
 8-52-2003
DETOUR - STAGE 2
MARTENSVILLE INTERCHANGE
PLAN AND PROFILE
 2_L30-CL - EXG MAIN ST OFF-RAMP
 TIE-IN TO 4 ST OFF-RAMP



DATE: 03-FEB-2018 10:00 AM



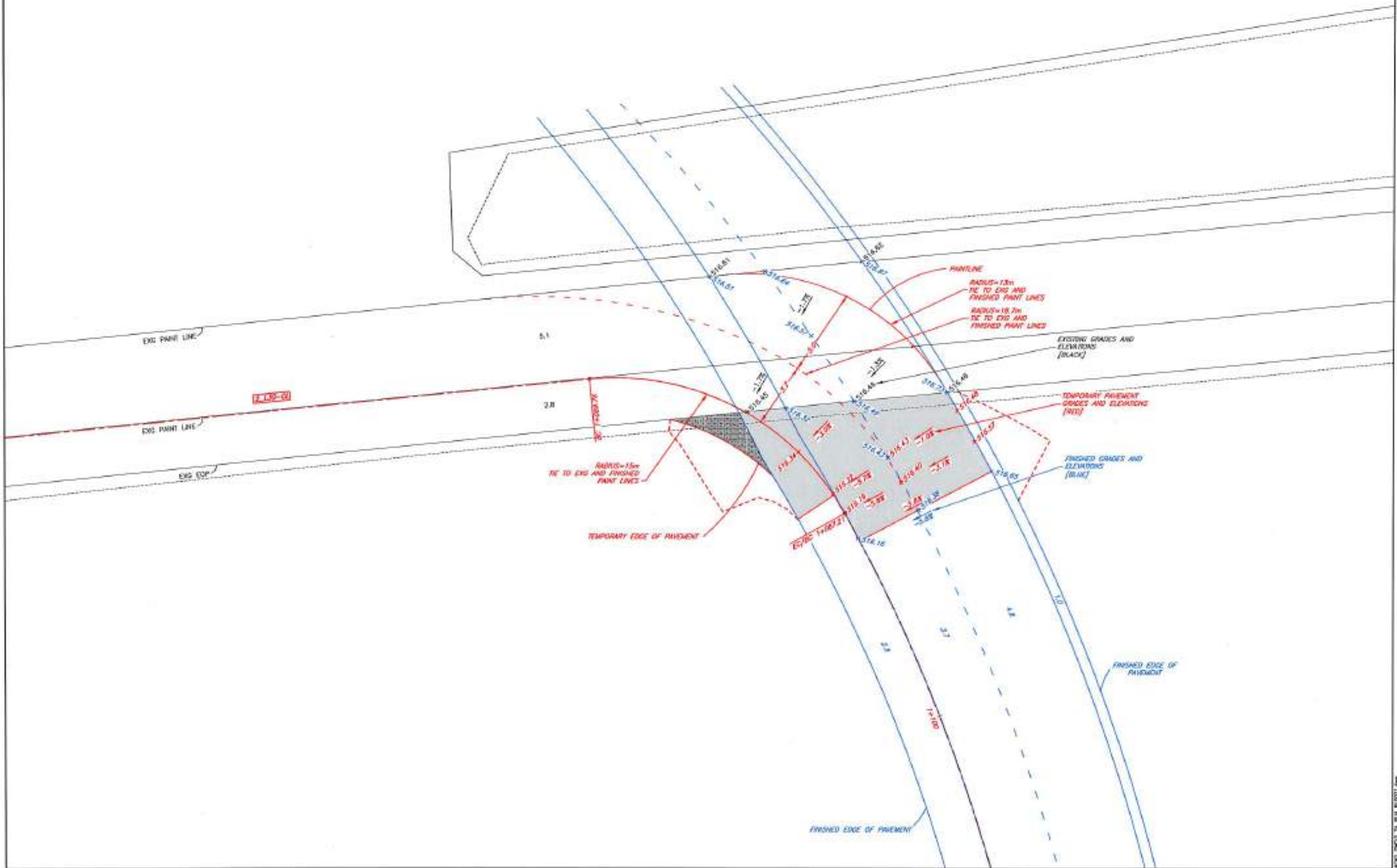
Association of Professional Engineers & Geoscientists
of Saskatchewan
CERTIFICATE OF AUTHORIZATION
McElhenny Engineering Services Ltd.
Number 30383
Permission to Draw as held by:
Signature: [Blank] Title: Eng. No. [Blank] Register: [Blank]
Full Registration: 2003



Government of Saskatchewan
FULL SIZE SCALE (M)
PLAN 1:500

REVISIONS			DATE	BY	NO.
NO.	DATE	REVISION	DATE	BY	NO.
1	12-01-00	ISSUED FOR PERMITS	12-01-00	A. BEUVEL	1
2	12-01-00	ISSUED FOR PERMITS	12-01-00	T. BOOTH	2

DETOUR - STAGE 2
MARTENSVILLE INTERCHANGE
TEMP PAVING - GEOMETRICS AND LANING
2_L30-CL - EXG MAIN ST OFF-RAMP
TIE-IN TO 4 ST OFF-RAMP



1:500

Association of Professional Engineers & Geoscientists of Saskatchewan
CERTIFICATE OF AUTHORIZATION
 Saskatchewan Engineering Services Ltd.
 Member 30343
 Practising in Saskatchewan
 Discipline: Civil Engineering
 No. Reg. No. 1000
 Name: Mark

Kiewit
 Government of Saskatchewan
 FULL SERVICE CONTRACTOR
 McElhattony
 Highway Safety Services Ltd.

REVISIONS		DATE	BY	NO.
NO.	DATE	REVISION	BY	NO.
0	12-01-09	ISSUE FOR CONSTRUCTION	A. HEUVEL	1
1	03-APR-2018	WORKS SUBMITTAL	T. BOOTH	1
2	03-APR-2018	NO. 259 SIGNAGE REVISED	D. FRISER	1

DETOUR - STAGE 3
MARTENSVILLE INTERCHANGE
TRAFFIC ACCOMMODATION PLAN
HIGHWAY 12 AT TOWNSHIP RD 384

LEGEND

- CONSTRUCTION WORK ZONE
- TRAFFIC FLOW (2 LANES)
- TRAFFIC FLOW (HEAD TO HEAD)
- TRAFFIC FLOW (1 LANE)

NOTES:
 1. PROVIDE DAILY SHORT-TERM SIGNAGE ADJACENT TO WORK ZONES PER SIGNAGE AS REQUIRED.
 2. COVER EXISTING AND PERMANENT SPEED SIGNAGE COMPLYING WITH WORK ZONE SPEEDS.

INSTALL PERMANENT SIGNAGE PRIOR TO TRAFFIC ON NEW SB HWY 12.

MOVE SB HWY 12 TRAFFIC ONTO NEW SB HWY 12. KEEP TRAFFIC SINGLE LANE ONLY, REDUCING SPEED TO 80km/h.

COMPLETE NEW NB HWY 12 AND NORTH SIDE TIE-IN TO EXISTING USING LANE CLOSURES PER TOWNSHIP 10-05-01, REDUCING SPEED TO 80km/h.

MAIN ST NB TRAFFIC FROM CENTENNIAL DRIVE PERMITTED TO TURN AB AND SB AT HWY 12. (EXISTING STOP CONTROLS)

DETOUR SIGNS FROM PREVIOUS STAGE TO REMAIN

DETOUR SIGNS FROM PREVIOUS STAGE TO REMAIN

ERADICATE RIGHT TURN STENCILS AND FOG LINE AT EXIST SUPER. INSTALL PERMANENT LINE PAINT PER SIGNING AND STRIPING PLANS. USE TEMPORARY DELINEATORS UNTIL PAINTING IS COMPLETE.

MAINTAIN NB HWY 12 TRAFFIC AT REDUCED SPEED (80km/h) SINGLE LANE NORTH OF 4 ST EXIST.

SHIFT SB HWY 12 TRAFFIC FROM MAIN ST AT REDUCED SPEED (80km/h) IN SINGLE LANE.

MAINTAIN EXIST. NB OFF-RAMP CONNECTING TO 4 ST. SEE TAB 8-S2-3006 AND 8-S2-3008 FOR DETAILS.

LINE PAINT 2-LANE HWY 12 NB WITH RIGHT-TURN ARROWS INTO FAST LANE AND RIGHT-TURN ARROWS INTO SLOW LANES DESTINED FOR 4 ST OFF-RAMP.

OPEN SIGNALS WITH PERMANENT SIGNAL TIMING. MONITOR AND ADJUST SIGNAL TIMING DURING DETOUR AS REQUIRED.

SEE TAB 8-S2-3002

SEE TAB 8-S2-3004

DATE: 03-APR-2018

LEGEND

CONSTRUCTION WORK ZONE

TRAFFIC FLOW (2 LANES)

TRAFFIC FLOW (ROAD TO ROAD)

TRAFFIC FLOW (1 LANE)

Association of Professional Engineers & Geoscientists
of Saskatchewan

CERTIFICATE OF AUTHORIZATION
McElhenny Engineering Services Ltd.
Number 20118

Division to Control held by:
Stephan 28, Exp. On: Signature:
Paul Engstrom 2022

Kiewit

McElhenny
Saskatchewan Highway Services Ltd.

Government of Saskatchewan
FULL SIZE SCALE (m)

REVISIONS		
NO.	DATE	DESCRIPTION
0	13 FEB 2018	D. FRASER
1	02 APR 2018	D. FRASER
NDC-059: SIGNAGE REVISED		

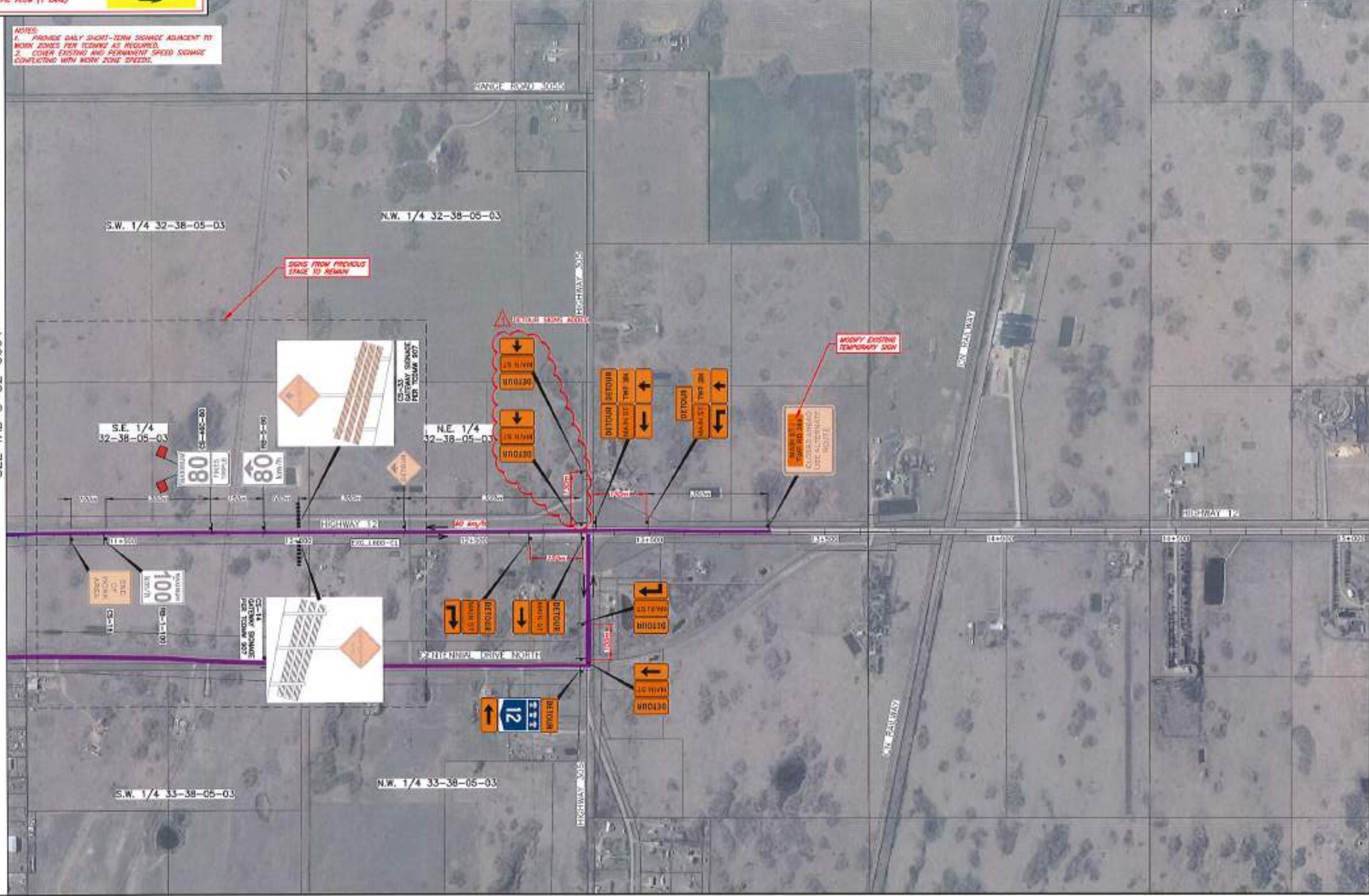
CS	12-01-02	146.00	B-52-3004
PROJ. DATE	ISSUE	SCALE	OF
A. HEUVEL	03-APR-2018		
T. BOOTH	03-APR-2018		

**DETOUR - STAGE 3
MARTENSVILLE INTERCHANGE
TRAFFIC ACCOMMODATION PLAN
HIGHWAY 12 AT HIGHWAY 305**

NOTES:

1. PROVIDE DAILY SHORT-TERM SIGNAGE ADJACENT TO WORK ZONES PER TOWNSHIP AS REQUIRED.
2. COVER EXISTING AND PERMANENT SPEED SIGNAGE CONFLICTING WITH WORK ZONE SPEEDS.

SEE TAB 8-S2-3004



LEGEND

CONSTRUCTION WORK ZONE

TRAFFIC FLOW (2 LANES)

TRAFFIC FLOW (ROAD TO HEAD)

TRAFFIC FLOW (1 LANE)

NOTES:

1. PROVIDE DAILY SHORT-TERM STORAGE ADJACENT TO WORK ZONES PER TOWNSHIP AS REQUIRED.

2. COVER EXISTING AND PERMANENT SPEED SIGNAGE COMPLETELY WITH WORK ZONE SIGNS.

Association of Professional Engineers & Geoscientists of Saskatchewan

CERTIFICATE OF AUTHORIZATION
McElhenny Engineering Services Ltd.
Number 2024

Providing to: Town of Martensville

Thyler McElhenny
P. Eng. No. 24425

Kiewit

Government of Saskatchewan
FULL SIZE SCALE (m)

McElhenny
McElhenny Engineering Services Ltd.

REVISIONS		DATE	BY	NO.
NO.	DATE	SIGNATURE	PHOTO DATE	
1	13-FEB-2018	D. FRASER		
WORKS SUBMITTAL		DESIGNED BY	CHECKED BY	
		DRAWN BY	DATE	

CD	12-01-00	DR. NO.	8-S2-4002
		SHEET	OF
		DWG. NO.	12-FEB-2018
		DATE	12-FEB-2018

DETOUR - STAGE 4
MARTENSVILLE INTERCHANGE
TRAFFIC ACCOMMODATION PLAN
HIGHWAY 12 AT TOWNSHIP RD 382



SEE TAB 8-S2-4003

DATE: 12-FEB-2018

Association of Professional Engineers & Geoscientists of Saskatchewan
CERTIFICATE OF AUTHORIZATION
 McElhenny Engineering Services Ltd.
 November 2018
 Provision by Council 16(1)
 Discipline: P.E. Eng. No. 123456
 Exp. Date: 12/31/2023

Kiewit
 Government of Saskatchewan
 FULL SIZE SCALE (1:1)
 McElhenny Engineering Services Ltd.

REVISIONS		CS	DATE	BY	NO.
0	13FEB2018	D. FRASER	12-01-09	A. HOVELL	8-52-1003
1	10APR2018	D. FRASER		T. BOOTH	03-APR-2018
2					03-APR-2018

DETOUR - STAGE 4
MARTENSVILLE INTERCHANGE
TRAFFIC ACCOMMODATION PLAN
HIGHWAY 12 AT TOWNSHIP RD 384

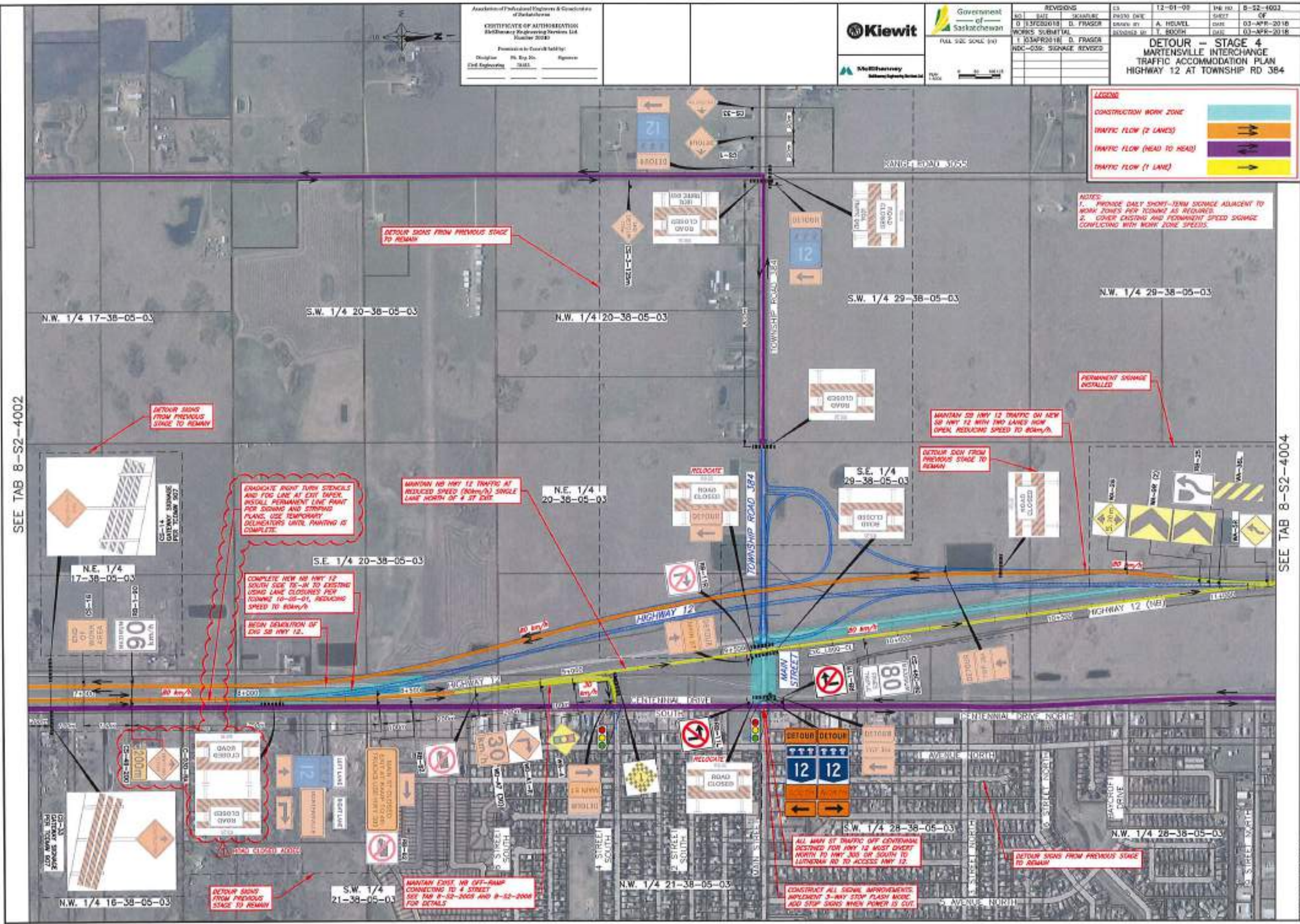
LEGEND

- CONSTRUCTION WORK ZONE
- TRAFFIC FLOW (2 LANES)
- TRAFFIC FLOW (HEAD TO HEAD)
- TRAFFIC FLOW (1 LANE)

NOTES:
 1. PROVIDE DAILY SHORT-TERM STORAGE ADJACENT TO WORK ZONES PER TOWNSHIP AS REQUIRED.
 2. COVER EXISTING AND PERMANENT SPEED SIGNAGE CONFLICTING WITH WORK ZONE SPEEDS.

SEE TAB 8-S2-4002

SEE TAB 8-S2-4004



DATE: 08-15-2018

LEGEND

CONSTRUCTION WORK ZONE

TRAFFIC FLOW (2 LANES)

TRAFFIC FLOW (HEAD TO HEAD)

TRAFFIC FLOW (1 LANE)

Association of Professional Engineers & Geoscientists
of Saskatchewan

CERTIFICATE OF AUTHORIZATION
McElhenny Engineering Services Ltd.
Number 28428

(Permits to Construct held by)
Suzanne Mc Elhenny
Civil Engineering 3143

Kiewit

McElhenny
Engineering Services Ltd.

Government of Saskatchewan

Full Size Scale (A)

REVISIONS		CD	12-01-20	TRF NO	8-S2-4004
NO.	DATE	BY	DESCRIPTION	DATE	OF
0	15-FEB-2018	D. PRASER	WORKS SUBMITTAL	A. HEMVOL	03-APR-2018
1	20-MAR-2018	D. PRASER	NDG-034: SIGNAGE REVISED	T. BOOTH	03-APR-2018

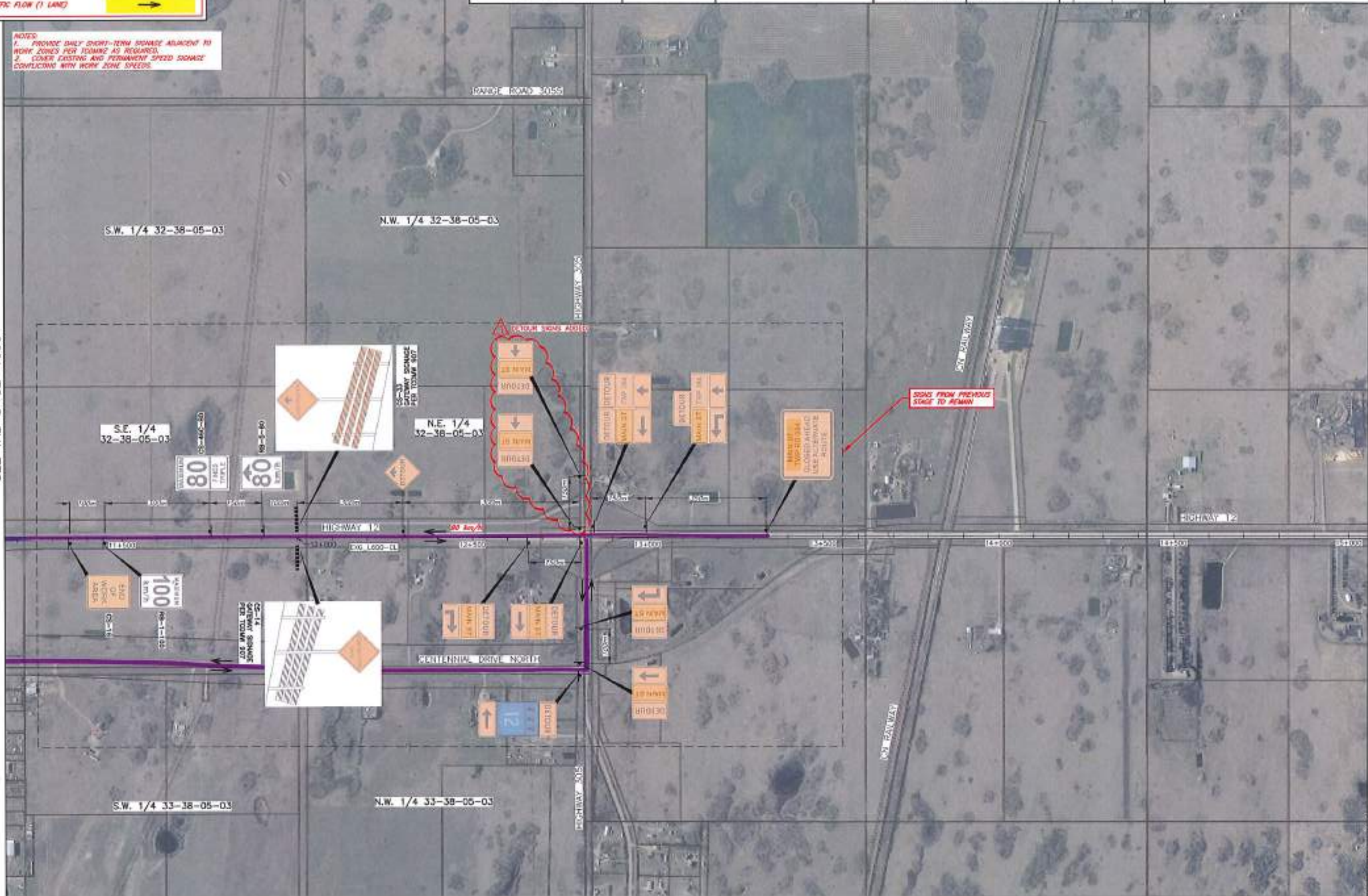
DETOUR - STAGE 4
MARTENSVILLE INTERCHANGE
TRAFFIC ACCOMMODATION PLAN
HIGHWAY 12 AT HIGHWAY 305

NOTES

1. PROVIDE DAILY SHORT-TERM SIGNAGE ADJACENT TO WORK ZONES PER TOCMWZ AS REQUIRED.

2. COVER EXISTING AND PERMANENT SPEED SIGNAGE CONFLICTING WITH WORK ZONE SPEEDS.

SEE TAB 8-S2-4003



DATE: 2018-03-26 10:30:30 AM

LEGEND

CONSTRUCTION WORK ZONE

TRAFFIC FLOW (2 LANES)

TRAFFIC FLOW (HEAD TO HEAD)

TRAFFIC FLOW (1 LANE)

NOTES:

1. PROVIDE DAILY SHORT-TERM STORAGE ADJACENT TO WORK ZONES PER SCOM2 AS REQUIRED.

2. COVER EXISTING AND PERMANENT SPEED SIGNAGE CONFLICTING WITH WORK ZONE SPEEDS.



Association of Professional Engineers & Geoscientists of Saskatchewan
CERTIFICATE OF AUTHORIZATION
 McElhenny Engineering Services Ltd.
 Member 9044
 Practising as Consulting Engineers
 Discipline: Civil Engineering, No. Reg. No. 9115, Expiration: 2019



Government of Saskatchewan
 FULL SIZE SCALE (1:1)

REVISIONS		CS	12-01-00	MR NO	8-52-5003
NO.	DATE	DESCRIPTION	DRAWN BY	CHECKED BY	DATE
1	12-01-00	ISSUE FOR PERMIT	A. HEUVEL	T. BOOTH	12-FEB-2018
WORKS SUBMITTED					12-FEB-2018

DETOUR - STAGE 5
MARTENSVILLE INTERCHANGE
TRAFFIC ACCOMMODATION PLAN
HIGHWAY 12 AT TOWNSHIP RD 382



SEE TAB 8-S2-5003

DATE: 2018-02-12 10:30 AM

LEGEND

CONSTRUCTION WORK ZONE

TRAFFIC FLOW (2 LANES)

TRAFFIC FLOW (HEAD TO HEAD)

TRAFFIC FLOW (1 LANE)

Association of Professional Engineers & Geoscientists
of Saskatchewan

CERTIFICATE OF AUTHORIZATION
McElhinney Engineering Services Ltd.
Number 20549

Division of Geomatics & Surveying
Regulation of Prof. Reg. No. 20549
Exp. Date 03/31/2018

Kiewit

Government of Saskatchewan
FULL SIZE SCALE (m)

McElhinney
Saskatchewan Highway Authority

REVISIONS			CD	12-01-03	140.00	8-22-2004
NO.	DATE	DESCRIPTION	PROJ. DATE	SCALE	DATE	OF
0	13-FEB-2018	D. PRASER			A. HEVEL	03-APR-2018
WORK'S SUBMITTAL			DESIGNED BY	T. BOOTH	DAT	03-APR-2018
1	02-APR-2018	D. PRASER				
WDC-039: STORAGE REVISED						

DETOUR - STAGE 5
MARTENSVILLE INTERCHANGE
TRAFFIC ACCOMMODATION PLAN
HIGHWAY 12 AT HIGHWAY 305

NOTES:

1. PROVIDE DAILY SHORT-TERM STORAGE ADJACENT TO WORK ZONES PER TCMWZ AS REQUIRED.
2. COVER EXISTING AND PERMANENT SPEED STORAGE CONFLICTING WITH WORK ZONE SPEEDS.

SEE TAB 8-S2-5003



DATE: 03-APR-2018

LEGEND

CONSTRUCTION WORK ZONE

TRAFFIC FLOW (2 LANES)

TRAFFIC FLOW (ROAD TO ROAD)

TRAFFIC FLOW (1 LANE)

NOTES:

1. PROVIDE DAILY SHORT-TERM SIGNAGE ADJACENT TO WORK ZONES PER TCMMS AS REQUIRED.

2. CONSIDER EXISTING AND PERMANENT SPEED SIGNAGE CONFLICTING WITH WORK ZONE SPEEDS.



Association of Professional Engineers & Geoscientists of Saskatchewan

CERTIFICATE OF ATTENDANCE

McElhannay Engineering Services Ltd.
Number 20249

Provided in Consult with by:

Project No. St. Reg. No. Signature

Chief Geoscientist JAL/2024



Government of Saskatchewan

FILL SITE SCALE (M)

0 50 100 150

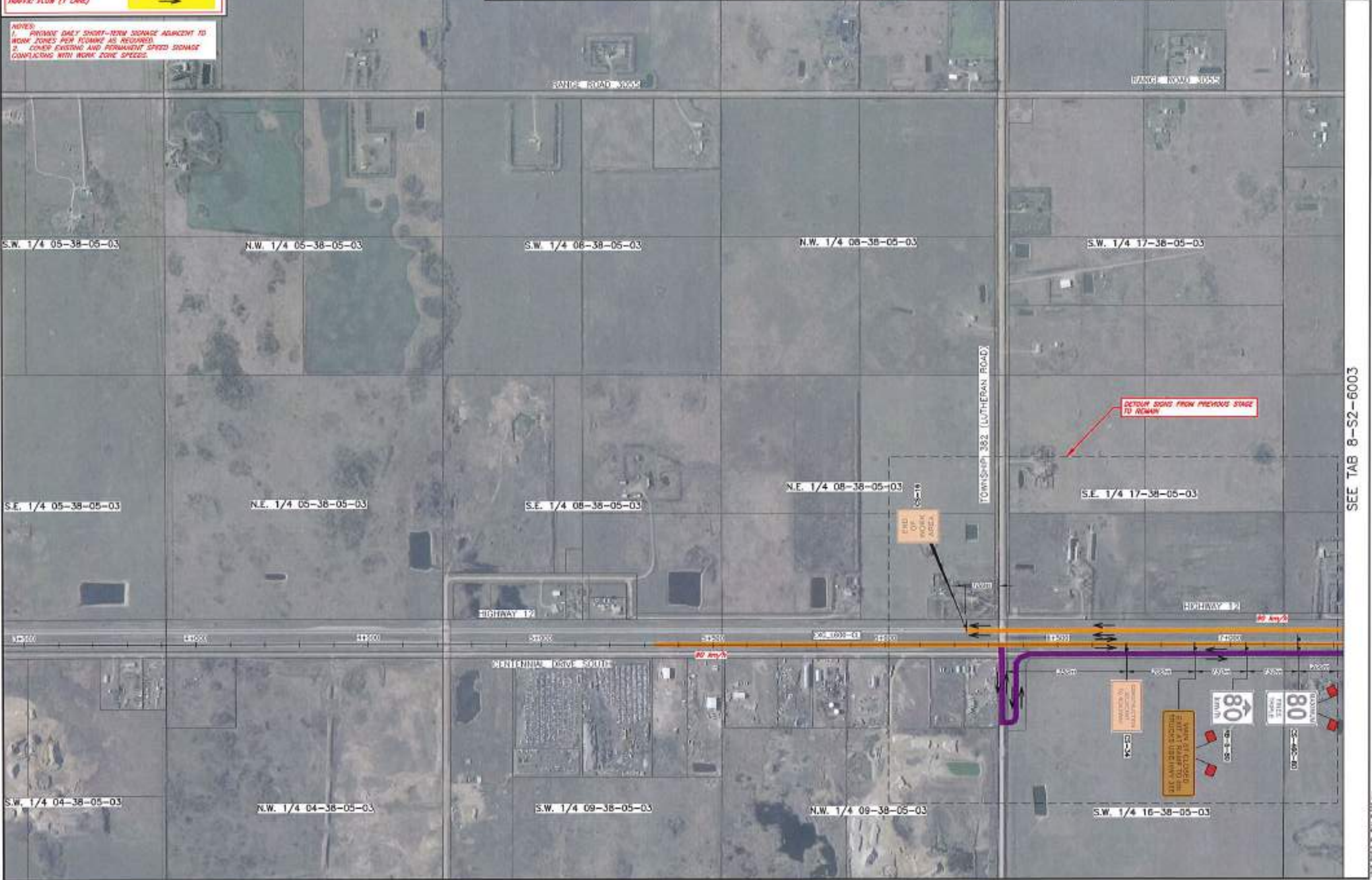
REVISIONS			CS	12-01-00	SHEET NO.	8-S2-6002
NO.	DATE	SIGNATURE	PROJECT DATE		SHEET	OF
0	12-02-2018	D. FRASER		A. HENDEL	13	FEB-2018
				T. BOOTH	13	FEB-2018

DETOUR - STAGE 6

MARTENSVILLE INTERCHANGE

TRAFFIC ACCOMMODATION PLAN

HIGHWAY 12 AT TOWNSHIP RD 382



SEE TAB 8-S2-6003

Association of Professional Engineers & Geoscientists of Saskatchewan
CERTIFICATE OF AUTHORIZATION
 Saskatchewan Engineering Services Ltd.
 Member 0040
 Provisional to Council No. 1171
 Division: PE, Reg. No. 1171
 Field Engineering: 2000

Kiewit
 Government of Saskatchewan
 McElhenney
 Highway Engineering Services Ltd.

REVISONS		CS	12-01-00	TAB NO.	8-S2-6003
NO.	DATE	DESCRIPTION	PREPARED BY	SHEET	OF
0	12/01/2018	D. FRASER	A. HEVELL	03	03-APR-2018
WORKS SUBMITTAL		APPROVED BY	T. BOZHI	DATE	03-APR-2018
1 03/04/2018 D. FRASER					
NSI-03A: SIGNAGE REVISED					

DETOUR - STAGE 6
MARTENSVILLE INTERCHANGE
TRAFFIC ACCOMMODATION PLAN
HIGHWAY 12 AT TOWNSHIP RD 384

LEGEND

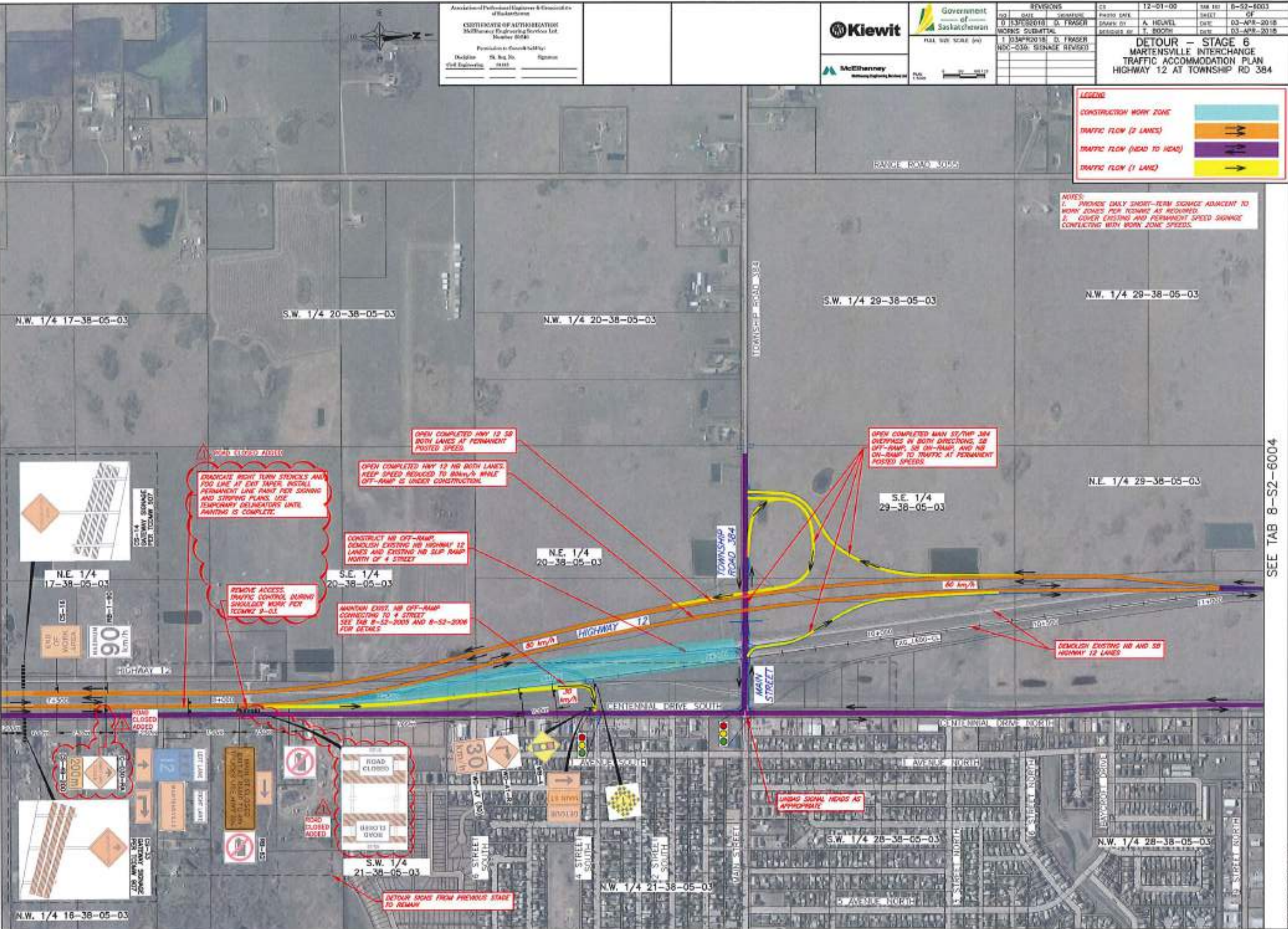
- CONSTRUCTION WORK ZONE
- TRAFFIC FLOW (2 LANES)
- TRAFFIC FLOW (HEAD TO HEAD)
- TRAFFIC FLOW (1 LANE)

NOTES:

1. PROVIDE ONLY SHORT-TERM SIGNAGE ADJACENT TO WORK ZONES PER TOWNSHIP AS REQUIRED.
2. COVER EXISTING AND PERMANENT SPEED SIGNAGE CONFLICTING WITH WORK ZONE SPEEDS.

SEE TAB 8-S2-6002

SEE TAB 8-S2-6004



LEGEND

CONSTRUCTION WORK ZONE

TRAFFIC FLOW (2 LANES)

TRAFFIC FLOW (HEAD TO HEAD)

TRAFFIC FLOW (1 LANE)

Association of Professional Engineers & Geomatics Engineers of Saskatchewan
COLLEGE OF ALTERNATIVES
 McElhenney Engineering Services Ltd.
 Number 3000
 Professional to be used only for:
 Discipline: 26, 30, 34, 35, 36
 Prof. Exp. No.: 2045



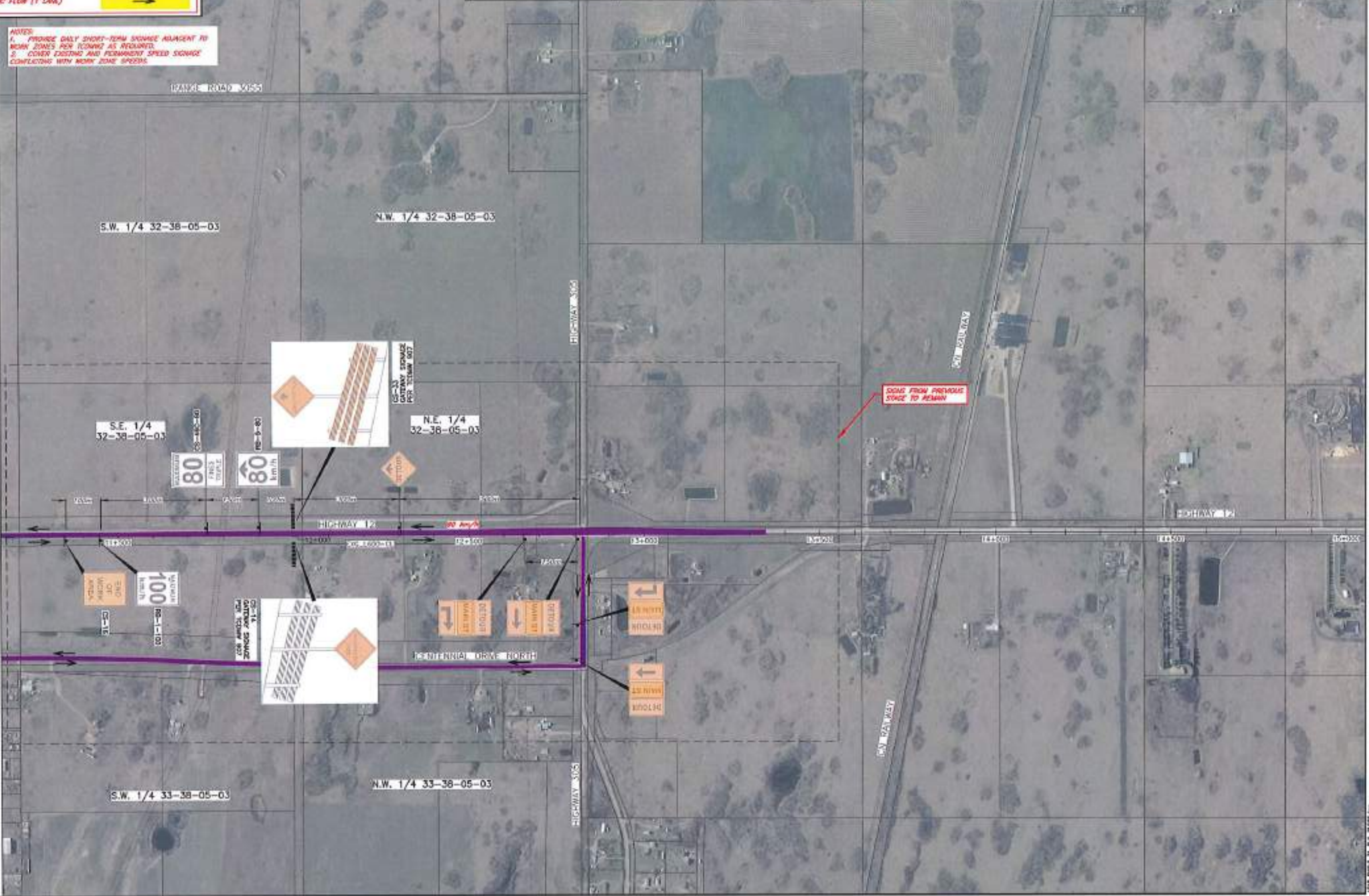
Government of Saskatchewan
 FULL SIZE SCALE (m)
 FULL SCALE

REVISIONS			DATE	BY	NO.
NO.	DATE	REVISION	SHEET	OF	
0	13/03/2018	G. FRASER	13	13	2018
WORKS SUBMITTAL			DESIGNED BY	T. BOOTH	DATE
			DATE	13-FEB-2018	
			DATE	13-FEB-2018	

DETOUR - STAGE 6
 MARTENSVILLE INTERCHANGE
 TRAFFIC ACCOMMODATION PLAN
 HIGHWAY 12 AT HIGHWAY 305

NOTES:
 1. PROVIDE DAILY SHORT-TERM SIGNS ADJACENT TO WORK ZONES PER ICONS AS REQUIRED.
 2. COVER EXISTING AND PERMANENT SPEED SIGNS CONFLICTING WITH WORK ZONE SPEEDS.

SEE TAB 8-S2-6003



DATE: 13-FEB-2018 11:53:00 AM
 USER: TBOOTH

LEGEND

- CONSTRUCTION WORK ZONE
- TRAFFIC FLOW (2 LANES)
- TRAFFIC FLOW (HEAD TO HEAD)
- TRAFFIC FLOW (1 LANE)

Association of Professional Engineers & Geoscientists
of Saskatchewan
CERTIFICATE OF AUTHORIZATION
 McElhenny Engineering Services Ltd.
 Number 90049
 Provision to Exercise Authority
 Discipline: Civil Engineering
 Exp. Date: 2019



Government of Saskatchewan
 Full Size Scale (m)
 0 100 200

REVISIONS		
NO.	DATE	REASON
0	13/FEB/2018	D. FRASER

CS	12-01-00	THE NO.	B-S2-7002
DATE		SHEET	OF
DRAWN BY	A. HEUVEL	DATE	13-FEB-2018
CHECKED BY	T. BUCHAN	DATE	13-FEB-2018

**DETOUR - STAGE 7
 MARTENSVILLE INTERCHANGE
 TRAFFIC ACCOMMODATION PLAN
 HIGHWAY 12 AT TOWNSHIP RD 382**



SEE TAB B-S2-7003

USE THIS SET ONLY

LEGEND

CONSTRUCTION WORK ZONE

TRAFFIC FLOW (2 LANES)

TRAFFIC FLOW (HEAD TO HEAD)

TRAFFIC FLOW (1 LANE)



Association of Professional Engineers & Geoscientists
of Saskatchewan

CERTIFICATE OF AUTHORIZATION
McCarthy Engineering Services Ltd.
Number 00040

Provided to Client by:
Highway St. Reg. No. Signature
Cell Supporting 0000

Kiewit

McCarthy
McCarthy Engineering Services Ltd.

Government
of
Saskatchewan

Full SOC SCALE (M)

0 50 100 M

REVISIONS		CS	12-01-20	REV. NO.	8-S2-7004
NO.	DATE	DESCRIPTION	DATE	SHEET	OF
0	12/01/2018	D. FRASER			
		DRAWN BY	A. HEWEL	DATE	13-FEB-2018
		DESIGNED BY	T. BOOTH	DATE	13-FEB-2018

DETOUR - STAGE 7
MARTENSVILLE INTERCHANGE
TRAFFIC ACCOMMODATION PLAN
HIGHWAY 12 AT HIGHWAY 305

SEE TAB 8-S2-7003



2018-02-13 10:28:27 AM

Association of Professional Engineers & Geoscientists
of Saskatchewan
CERTIFICATE OF AUTHORIZATION
McElhenny Engineering Services Ltd.
Number 90049
Provisional to Projects held by:
Project: 26, Red No. Region:
Field Engineer: 2018

Kiewit

Government
of
Saskatchewan
FULL SIZE SCALE (m)
1:1000

REVISIONS			CS	12-01-00	TAB NO.	8-S2-7003
NO.	DATE	SIGNATURE	PREP. DATE		SHEET	OF
0	13-FEB-2018	D. FRASER		A. HUNTEL	DATE	13-FEB-2018
				T. BOOTH	DATE	13-FEB-2018

WORKS SUBMITTAL

**DETOUR - STAGE 7
MARTENSVILLE INTERCHANGE
TRAFFIC ACCOMMODATION PLAN
HIGHWAY 12 AT TOWNSHIP RD 384**

LEGEND

- CONSTRUCTION WORK ZONE
- TRAFFIC FLOW (2 LANES)
- TRAFFIC FLOW (HEAD TO HEAD)
- TRAFFIC FLOW (1 LANE)

NOTES:
1. PROVIDE DAILY SHORT-TERM SIGNAGE ADJACENT TO WORK ZONES PER TOWNSHIP AS REQUIRED.
2. COVER EXISTING AND PERMANENT SPEED SIGNAGE CONFLICTING WITH WORK ZONE SPEEDS.

SEE TAB 8-S2-7002

SEE TAB 8-S2-7004

