

# CONTROL SECTION 11-10-00 & 11-11-00 2.80 km SOUTH TO 2.90 km NORTH OF THE JUNCTION OF HIGHWAY 305 AT WARMAN

CONTRACT NO. RFP150009  
SHEET 1 OF 5

km 17.679 TO km 18.070 (CS 11-10) & km 0.000 to km 5.311 (CS 11-11)  
SPEED REDUCTION, LANE CLOSURES, AND DETOURS  
STAGES 3 TO 5 TRAFFIC ACCOMMODATION PLAN (HIGHWAY 11)

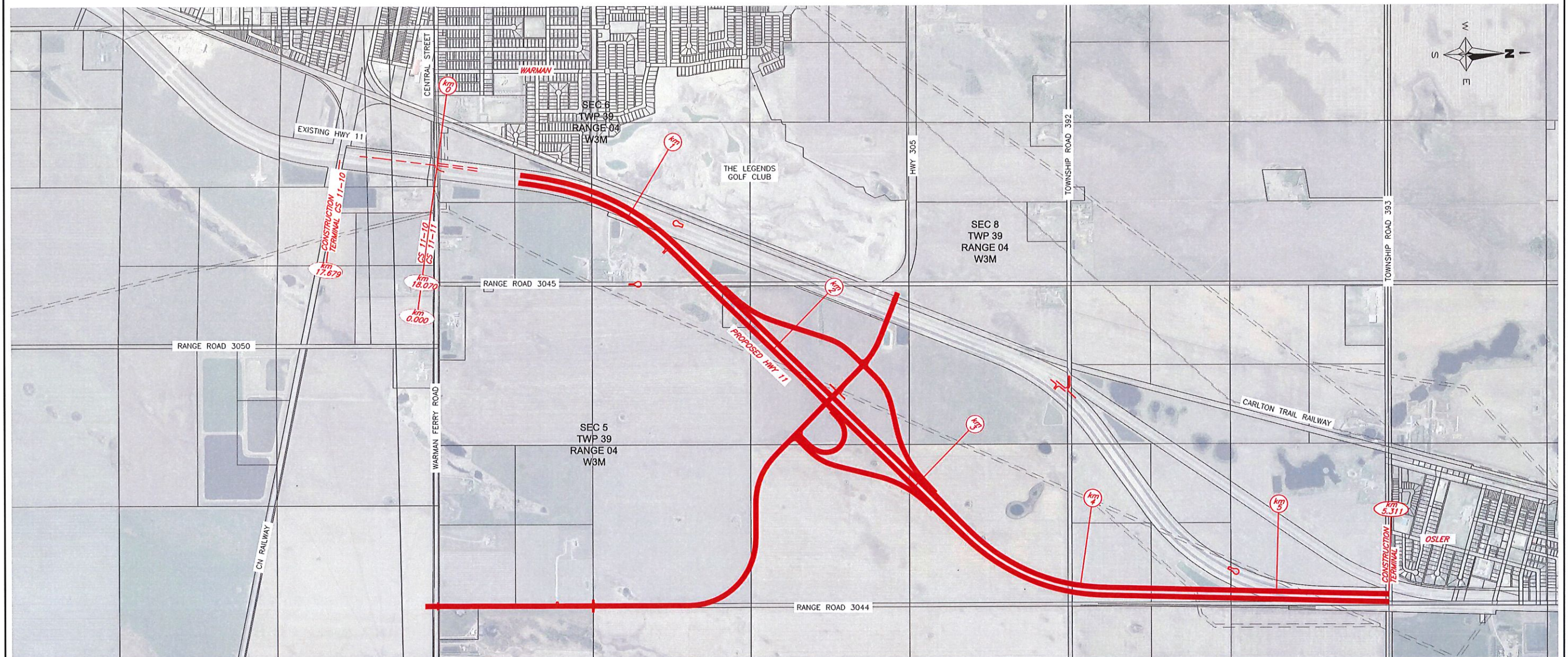


## WARMAN INTERCHANGE



TRAFFIC ACCOMMODATION PLAN - WORKS SUBMITTAL

DATE: 26-FEBRUARY-2018



Association of Professional Engineers & Geoscientists of Saskatchewan  <b>CERTIFICATE OF AUTHORIZATION</b> McElhanney Engineering Services Ltd. Number 29240  Permission to Consult held by: Discipline    Sk. Reg. No.    Signature Civil Engineering    34413    _____				  	 FULL SIZE SCALE (m)	REVISIONS NO    DATE    SIGNATURE 0    26FEB2018    D. FRASER	CS    11-11-00 PHOTO DATE DRAWN BY    A. HEUVEL DESIGNED BY    T. BOOTH	TAB NO    8-51-3001 SHEET    OF DATE    26-FEB-2018 DATE    26-FEB-2018
						<b>DETOUR – STAGES 3-5</b> <b>WARMAN INTERCHANGE</b> <b>TRAFFIC ACCOMMODATION PLAN</b> <b>DRAWING INDEX</b>		

### WARMAN INTERCHANGE - DRAWING INDEX

PACKAGE DESCRIPTION	PLAN DESCRIPTION	TAB No.	CAD File Name	DRAWING TITLE	REV No. & DATE	
					No.	YYYY-MM-DD
<b>WARMAN INTERCHANGE TRAFFIC ACCOMMODATION PLANS WORKS SUBMITTAL</b>	<b>STAGES 3-5</b>	8-51-3000	2-TA_PLN_CV.dwg	TITLE SHEET	0	2018-02-26
		8-51-3001	2-TA_PLN_IN.dwg	DRAWING INDEX	0	2018-02-26
		8-51-3002	2-TA_PLN_PL003.dwg	STAGE 3 - TRAFFIC CONTROL PLAN - HIGHWAY 11 AT HIGHWAY 305 - CENTRAL STREET DETOUR	0	2018-02-26
		8-51-4002	2-TA_PLN_PL004.dwg	STAGE 4 - TRAFFIC CONTROL PLAN - HIGHWAY 11 AT HIGHWAY 305 - CENTRAL STREET DETOUR	0	2018-02-26
		8-51-5002	2-TA_PLN_PL005.dwg	STAGE 5 - TRAFFIC CONTROL PLAN - HIGHWAY 11 AT HIGHWAY 305 - CENTRAL STREET DETOUR	0	2018-02-26

Association of Professional Engineers & Geoscientists of Saskatchewan  
**CERTIFICATE OF AUTHORIZATION**  
 McElhanney Engineering Services Ltd.  
 Number 20240  
 Permission to Consult held by:  
 Discipline: Civil Engineering, Stk. Reg. No.: 34413, Signature: \_\_\_\_\_

**Kiewit**  
**McElhanney**  
 Government of Saskatchewan  
 FULL SIZE SCALE (m)  
 PLAN 1:7500

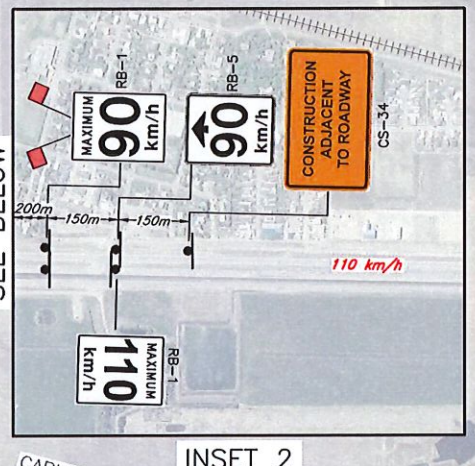
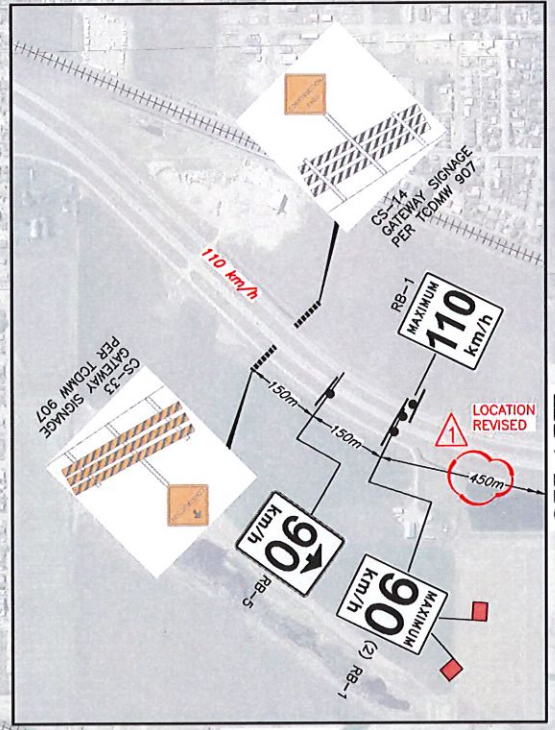
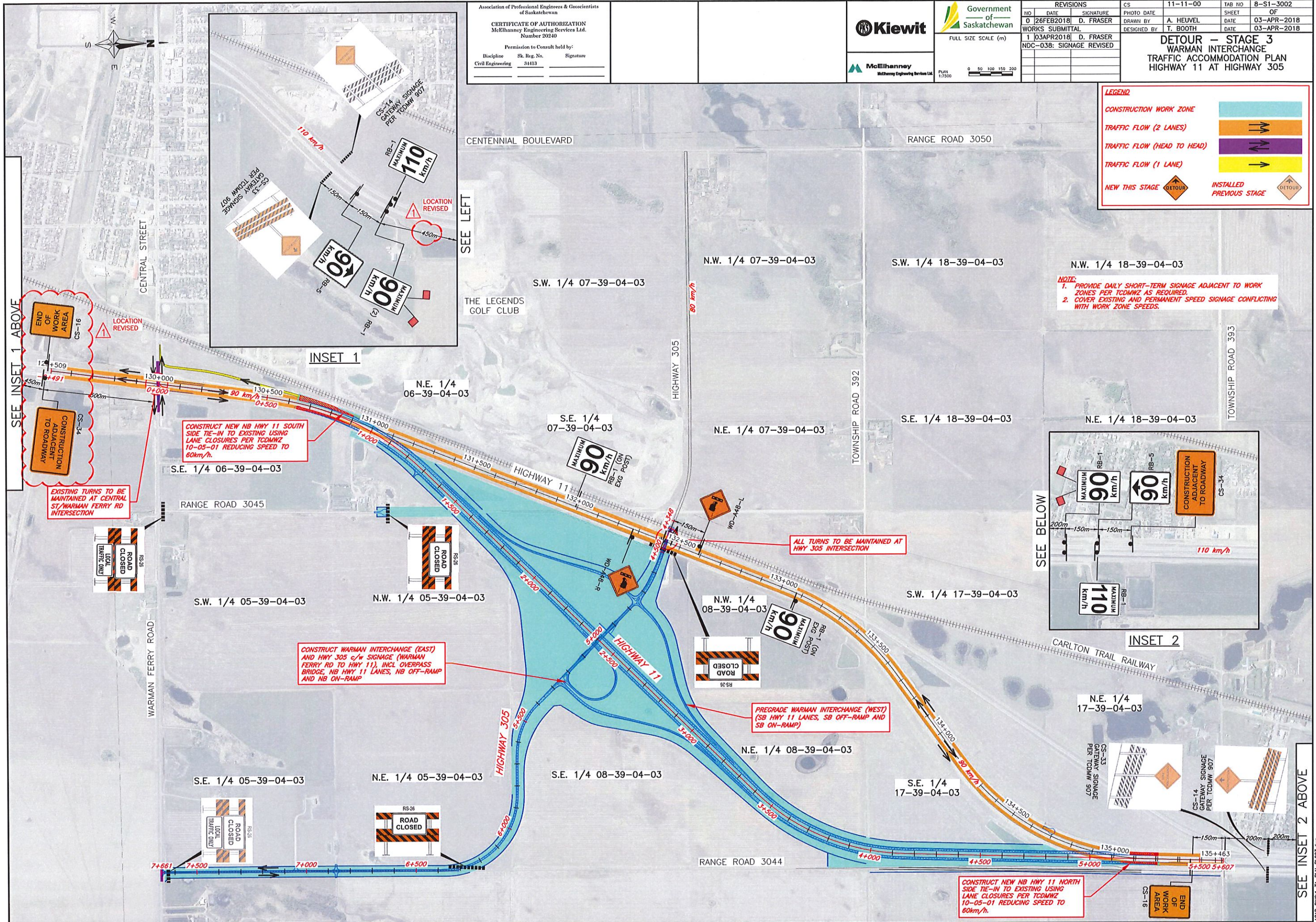
REVISIONS			CS	11-11-00	TAB NO	8-S1-3002
NO	DATE	SIGNATURE	PHOTO DATE		SHEET	OF
0	26FEB2018	D. FRASER		A. HEUVEL	DATE	03-APR-2018
				T. BOOTH	DATE	03-APR-2018
WORKS SUBMITTAL						
1 03APR2018 D. FRASER						
NDC-038: SIGNAGE REVISED						

**DETOUR - STAGE 3**  
**WARMAN INTERCHANGE**  
**TRAFFIC ACCOMMODATION PLAN**  
**HIGHWAY 11 AT HIGHWAY 305**

**LEGEND**

- CONSTRUCTION WORK ZONE
- TRAFFIC FLOW (2 LANES)
- TRAFFIC FLOW (HEAD TO HEAD)
- TRAFFIC FLOW (1 LANE)
- NEW THIS STAGE
- INSTALLED PREVIOUS STAGE

**NOTE:**  
 1. PROVIDE DAILY SHORT-TERM SIGNAGE ADJACENT TO WORK ZONES PER TCDMWZ AS REQUIRED.  
 2. COVER EXISTING AND PERMANENT SPEED SIGNAGE CONFLICTING WITH WORK ZONE SPEEDS.

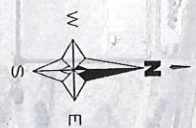


SEE INSET 1 ABOVE

SEE BELOW

SEE INSET 2 ABOVE

ACAD DWG: T-11-11-0003.dwg  
 LAST REV DATE: 4/3/2018



Association of Professional Engineers & Geoscientists of Saskatchewan  
**CERTIFICATE OF AUTHORIZATION**  
 McElhannay Engineering Services Ltd.  
 Number 20240  
 Permission to Consult held by:  
 Discipline: Civil Engineering, Sk. Reg. No.: 34413, Signature: \_\_\_\_\_

**Kiewit**  
 Government of Saskatchewan  
 FULL SIZE SCALE (m)  
 PLAN 1:7500  
 0 50 100 150 200

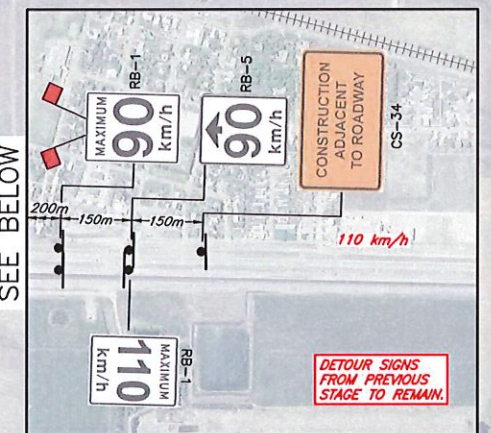
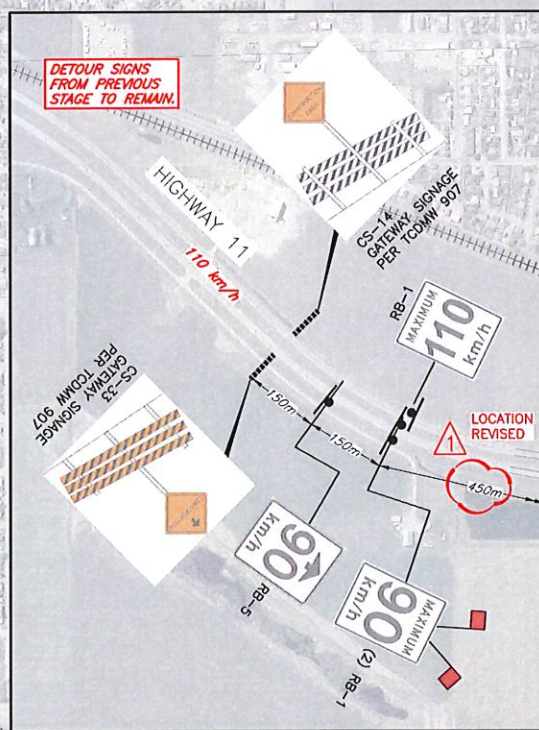
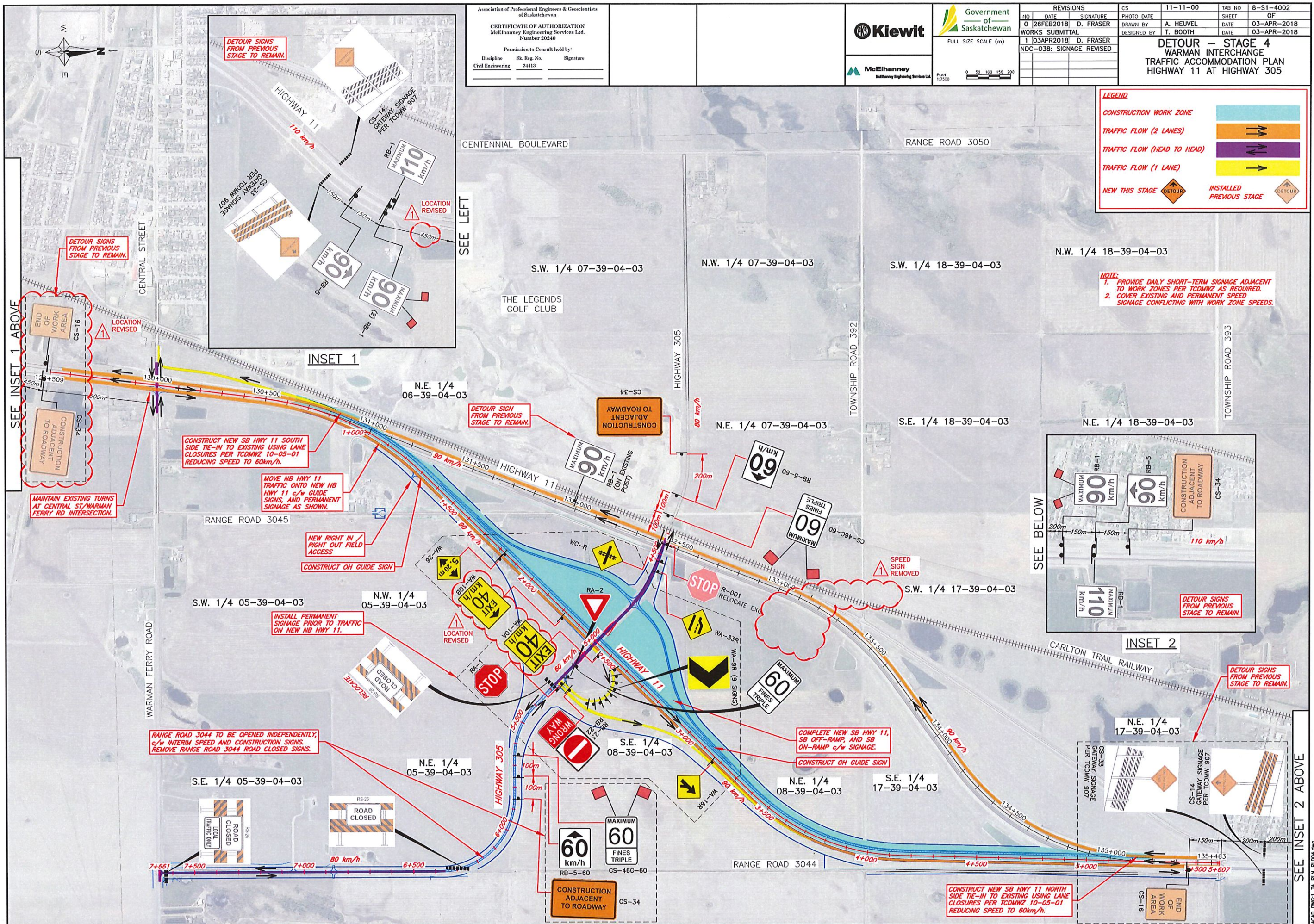
REVISIONS			CS	11-11-00	TAB NO	8-S1-4002
NO	DATE	SIGNATURE	PHOTO DATE	A. HEUVEL	SHEET	OF
0	26FEB2018	D. FRASER	DRAWN BY	T. BOOTH	DATE	03-APR-2018
WORKS SUBMITTAL			DESIGNED BY	T. BOOTH	DATE	03-APR-2018
1	03APR2018	D. FRASER	NDC-038: SIGNAGE REVISED			

**DETOUR - STAGE 4**  
**WARMAN INTERCHANGE**  
**TRAFFIC ACCOMMODATION PLAN**  
**HIGHWAY 11 AT HIGHWAY 305**

**LEGEND**

- CONSTRUCTION WORK ZONE
- TRAFFIC FLOW (2 LANES)
- TRAFFIC FLOW (HEAD TO HEAD)
- TRAFFIC FLOW (1 LANE)
- NEW THIS STAGE
- INSTALLED PREVIOUS STAGE

**NOTE:**  
 1. PROVIDE DAILY SHORT-TERM SIGNAGE ADJACENT TO WORK ZONES PER TCDMWZ AS REQUIRED.  
 2. COVER EXISTING AND PERMANENT SPEED SIGNAGE CONFLICTING WITH WORK ZONE SPEEDS.



SEE INSET 1 ABOVE

SEE BELOW

SEE INSET 2 ABOVE

JUST REV DATE 27/04/2018

Association of Professional Engineers & Geoscientists of Saskatchewan  
**CERTIFICATE OF AUTHORIZATION**  
 McElhanney Engineering Services Ltd.  
 Number 29240  
 Permission to Consult held by:  
 Discipline: Civil Engineering  
 Sk. Reg. No.: 31413  
 Signature: \_\_\_\_\_

**Kiewit**  
 Government of Saskatchewan  
 FULL SIZE SCALE (m)  
 PLAN 1:7500  
 0 50 100 150 200

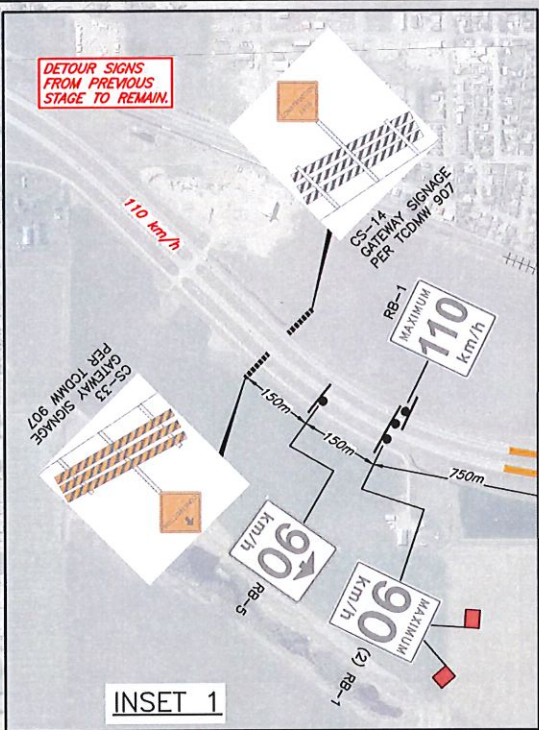
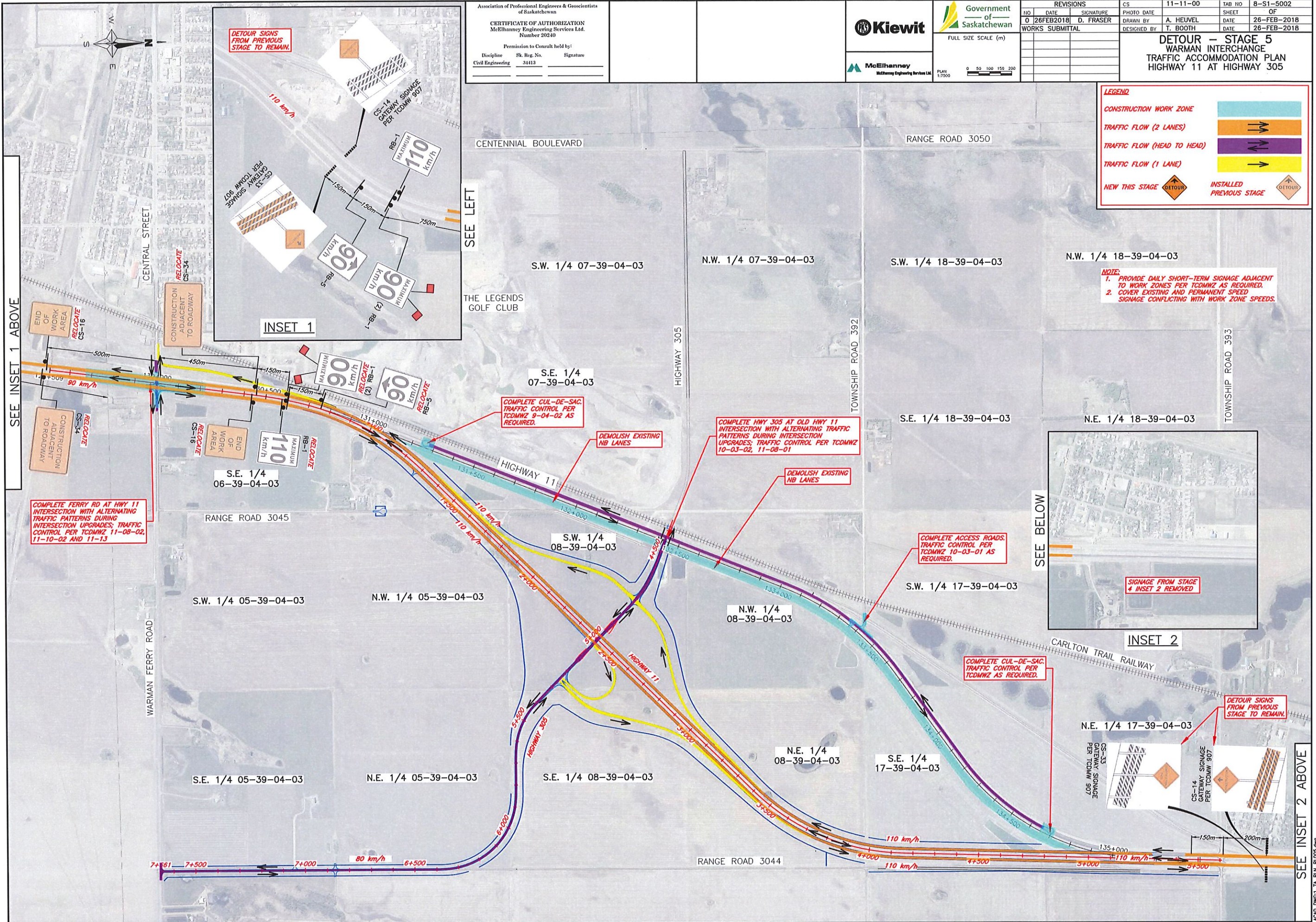
REVISIONS			CS	11-11-00	TAB NO	8-S1-5002
NO	DATE	SIGNATURE	PHOTO DATE		SHEET	OF
0	26FEB2018	D. FRASER	A. HEUVEL		DATE	26-FEB-2018
			T. BOOTH		DATE	26-FEB-2018

**DETOUR - STAGE 5**  
**WARMAN INTERCHANGE**  
**TRAFFIC ACCOMMODATION PLAN**  
**HIGHWAY 11 AT HIGHWAY 305**

**LEGEND**

- CONSTRUCTION WORK ZONE
- TRAFFIC FLOW (2 LANES)
- TRAFFIC FLOW (HEAD TO HEAD)
- TRAFFIC FLOW (1 LANE)
- NEW THIS STAGE
- INSTALLED PREVIOUS STAGE

**NOTE:**  
 1. PROVIDE DAILY SHORT-TERM SIGNAGE ADJACENT TO WORK ZONES PER TCDMWZ AS REQUIRED.  
 2. COVER EXISTING AND PERMANENT SPEED SIGNAGE CONFLICTING WITH WORK ZONE SPEEDS.



SEE INSET 1 ABOVE

SEE BELOW

SEE INSET 2 ABOVE